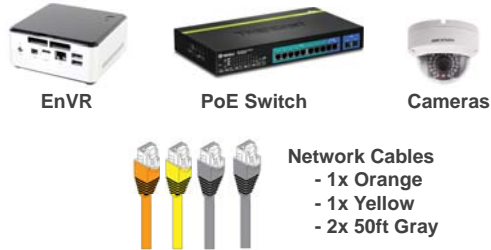


Quick Setup Guide

1 What's in the box?



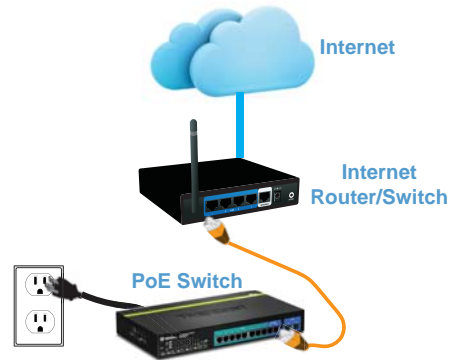
What you supply...



2

Connect the power cable to the back of the PoE switch and into a power outlet.

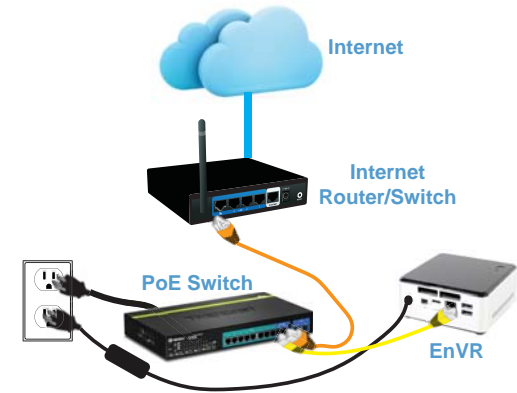
Connect the orange network cable from the port labeled "Gigabit 10R" on the PoE Switch to your internet router using a port labeled "LAN".



3

Connect the power cable to the back of the EnVR and into a power outlet.

Connect the yellow network cable from the PoE switch port labeled "Gigabit 9R" to the network port labeled " " on the back of the EnVR.



The install location must have air flow.

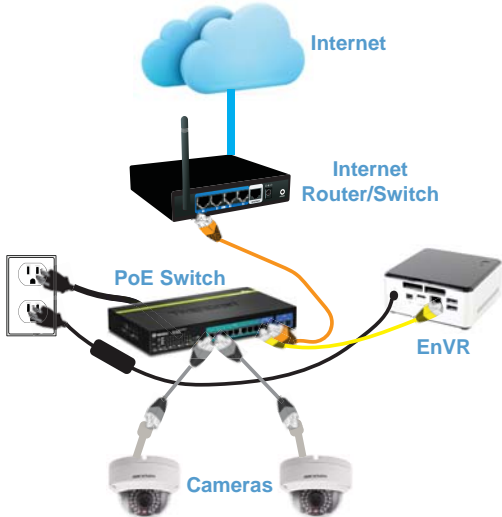
Temperatures should not exceed 105°.

Do not stack objects on top of the EnVR.

4

Using the network port dongle attached to the camera, connect each camera to the PoE switch with the gray network cable.

Connect the first camera into the port labeled "PoE1" and the second camera into "PoE2".

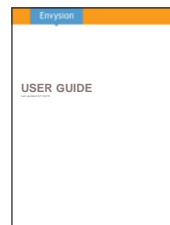


5

Turn on the EnVR by pressing the power button on top of the device. Confirm the button has a blue light illuminated.

Wait 4-5 minutes for the EnVR to establish a connection to the Envysion Cloud.

If you have any problems connecting your equipment, refer to the detailed User Guide.

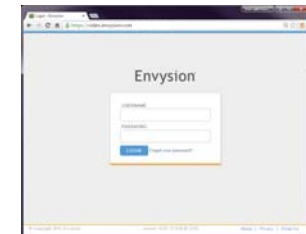


You are done when....



6

Log into the Envysion application at video.envysion.com using the login credentials that were emailed to you from the Envysion Support Team.



Refer to the "Begin Watching Video" Quick Start Guide for how to get started watching Live and Recorded Video!

